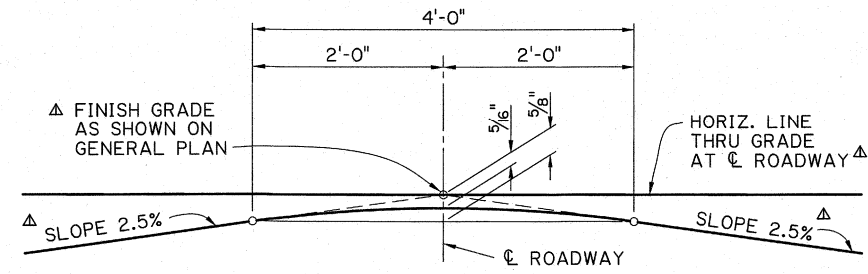


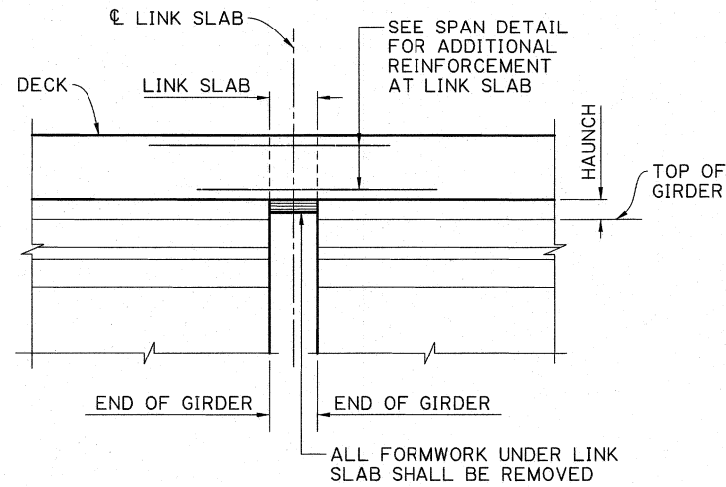
MISCELLANEOUS SPAN DETAILS INDEX

| | BRIDGE STANDARD INDEX NO. | SERIES | DESCRIPTION |
|------------------|---------------------------|--------|--|
| COMMON DETAILS | BD.2.4.1.0.01 | 1 OF 2 | INDEX, CROWN, DECK PLACEMENT, FORMWORK @ LINK SLAB |
| | BD.2.4.1.0.02 | 2 OF 2 | DECK DRAINAGE |
| EXPANSION JOINTS | BD.2.4.5.1.01 | 1 OF 2 | SEALED EXPANSION JOINT (PREFORMED NEOPRENE SEAL) |
| | BD.2.4.5.1.02 | 2 OF 2 | SEALED EXPANSION JOINT (PREFORMED NEOPRENE SEAL) |
| | BD.2.4.5.2.01 | 1 OF 2 | SEALED EXPANSION JOINT (PREFORMED SILICONE SEAL) |
| | BD.2.4.5.2.02 | 2 OF 2 | SEALED EXPANSION JOINT (PREFORMED SILICONE SEAL) |
| | BD.2.4.5.3.01 | 1 OF 1 | POURED SILICONE JOINT |



PARABOLIC CROWN AT ROADWAY

(N.T.S.)
 ▲ UNLESS OTHERWISE NOTED IN PLANS



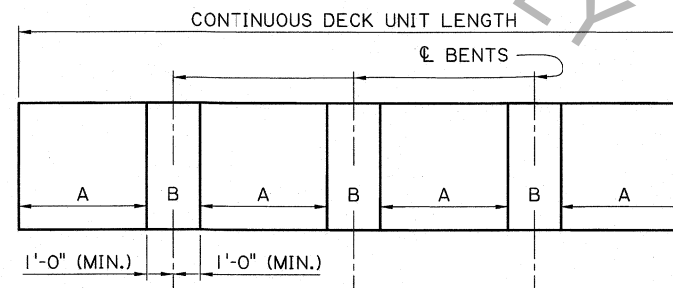
FORMWORK AT LINK SLAB

(N.T.S.)
 (DECK REINFORCEMENT NOT SHOWN FOR CLARITY)

DECK PLACEMENT NOTES:

1. CONFORM TO 805.05 OF THE STANDARD SPECIFICATIONS.
2. PLACE DECK UNIT USING ONE CONTINUOUS PLACEMENT.
3. PREVENT INITIAL SET FROM OCCURRING WITHIN AND DURING PLACEMENT.
4. LIMIT PLACEMENT DURATION TO 4 HOURS MAXIMUM. IF MORE TIME IS NEEDED, SUBMIT A PROPOSED PLACEMENT PLAN AND DURATION, INCLUDING METHOD AND SPECIFICATIONS FOR REDUCING CONCRETE SET TIME, SUCH AS USE OF ADMIXTURES.
5. IF DECK UNIT PLACEMENT CANNOT BE CONTINUOUS, THE SEGMENTED PLACEMENT SHOWN BELOW MAY BE USED IF PERMITTED BY THE ENGINEER. SEGMENTS "A" MUST FIRST BE PLACED TOGETHER AND CURED, FOLLOWED BY PLACING SEGMENTS "B" TOGETHER AND CURED.

FOR CONSTRUCTION JOINTS, CONFORM TO 805.05.8.



SEGMENTED DECK PLACEMENT SEQUENCE

(N.T.S.)

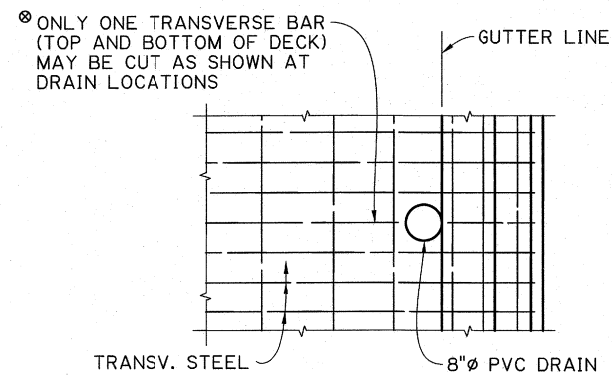
| | |
|--------------------------------------|--------------|
| SHEET NUMBER | |
| DESIGNED | A. LANCASTER |
| CHECKED | K. KEMP |
| PARISH | LANCASTER |
| CONTROL SECTION | |
| REVIEWED | Z.Z. FU |
| STATE PROJECT | |
| SERIES # | 1 OF 2 |
| NO. | |
| DATE | |
| REVISION OR CHANGE ORDER DESCRIPTION | |
| BY | |

MISC. SPAN DETAILS
 INDEX, CROWN
 LINK SLAB, POURING SEQUENCE
 MISC. SPAN DETAILS (COMMON)

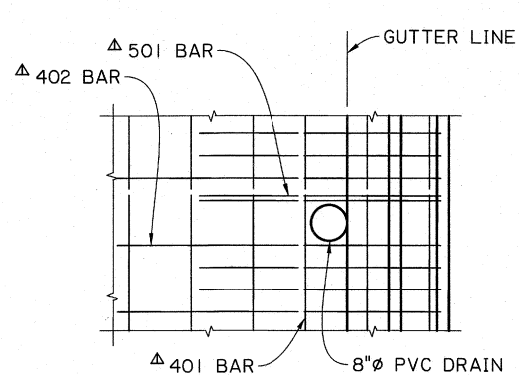
BD.2.4.1.0.01

STATE OF LOUISIANA
 ADAM LANCASTER
 License No. 35573
 PROFESSIONAL ENGINEER
 CIVIL ENGINEERING
 7/19/18

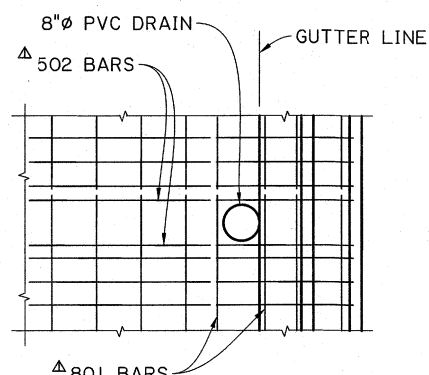
DOTD
 DOTD BRIDGE DESIGN



PLAN AT DECK DRAIN
(GIRDER BRIDGE)



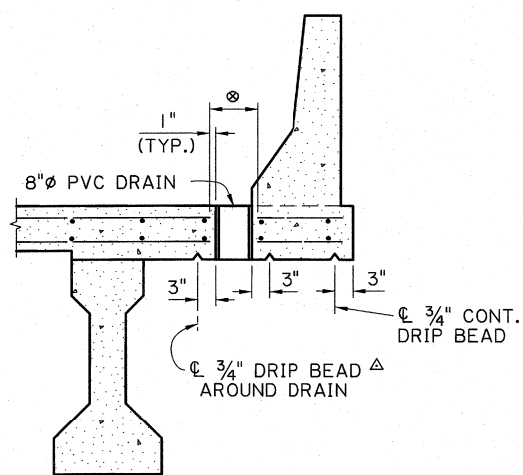
PLAN AT DECK DRAIN
(SLAB SPAN - TOP STEEL)



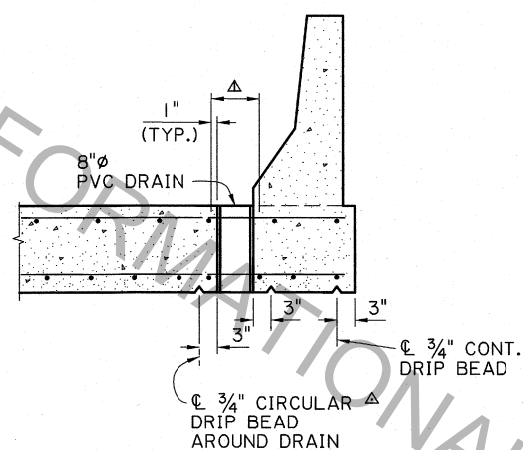
PLAN AT DECK DRAIN
(SLAB SPAN - BOTTOM STEEL)

NOTES:

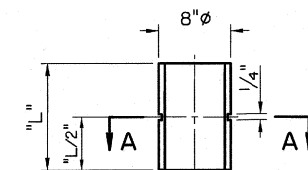
1. SEE PROJECT PLAN FOR SPECIFIED DECK DRAINAGE.
2. BRIDGE RAILING SLOT DRAINS WILL BE PAID FOR AS PART OF THE BRIDGE RAILING PAY ITEM. DECK DRAIN PIPES WILL BE PAID FOR AS PART OF THE DECK CONCRETE PAY ITEM.
3. A 1/2" EXTENSION OF PIPE DRAIN BELOW THE BOTTOM OF THE DECK MAY BE USED IN LIEU OF CIRCULAR 3/4" DRIP BEAD AROUND DECK DRAIN.
4. FOR DECK OVERHANGS LESS THAN 4'-4" (USING LG GIRDERS), SLOTTED BARRIERS OR AN ALTERNATE DECK DRAIN CONFIGURATION MUST BE USED.
5. ADJUST SLAB SPAN TOP AND BOTTOM STEEL AS NEEDED (BY SHIFTING OR BUNDLING TO ADJACENT REBAR) TO AVOID 8"Ø DECK DRAINS. MAINTAIN MINIMUM SPECIFIED CONCRETE COVER.



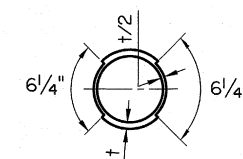
SECTION AT DECK DRAIN - AASHTO GIRDER
(N.T.S.)



SECTION AT DECK DRAIN - SLAB SPAN
(N.T.S.)

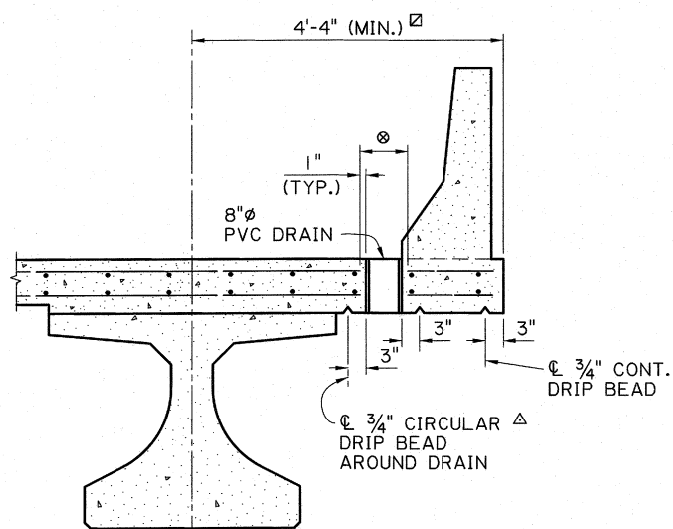


ELEVATION

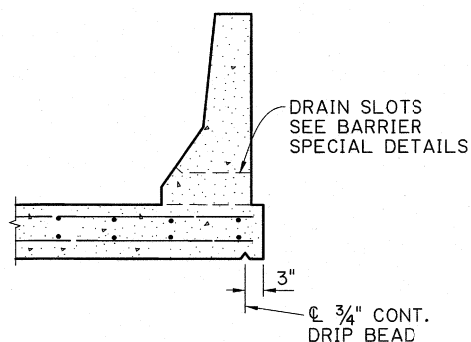


SECTION A-A

DETAIL "A" - PVC DRAIN
SHOWING GROOVE DETAILS
(N.T.S.)



SECTION AT DECK DRAIN - LG GIRDER
(N.T.S.)



SECTION THRU SLOTTED BARRIER
(GIRDER OR SLAB SPAN BRIDGES)
(N.T.S.)

FOR INFORMATIONAL PURPOSES ONLY

| | | | | | | | |
|--------------|---------|--------------------------------------|---------|-----------------|---------|---------------|---------|
| SHEET NUMBER | | PARISH | | CONTROL SECTION | | STATE PROJECT | |
| DESIGNED | CHECKED | A.L. LANCASTER | K. KEMP | A.L. LANCASTER | K. KEMP | REVIEWED | Z.Z. FU |
| SERIES # | 2 | OF | 2 | | | | |
| NO. | DATE | REVISION OR CHANGE ORDER DESCRIPTION | | | | | |
| BY | | | | | | | |



MISC. SPAN DETAILS
DECK DRAINAGE
MISC. SPAN DETAILS (COMMON)

